



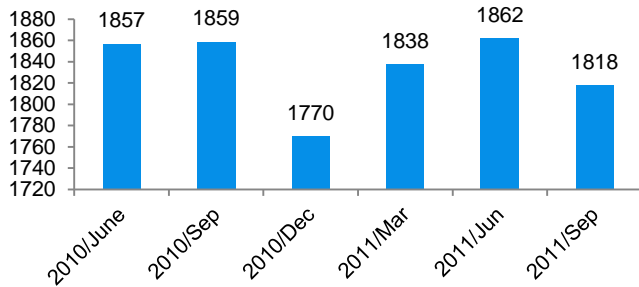
## Discussion Paper 2: Approaches for Reform

# Social Assistance in Guelph-Wellington

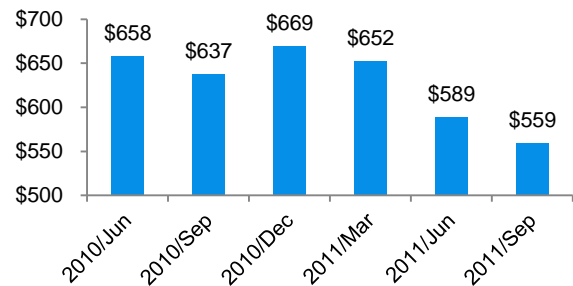
## Ontario Works

**Ontario Works** provides employment and financial assistance to people who are in temporary financial need. The employment assistance helps people become and stay employed and includes job search support services, basic education and job skills training, community and employment placement, supports to self-employment, Learning, Earning and Parenting program, addiction services and earning exemptions that allow participants to earn income as they move back into the workforce.

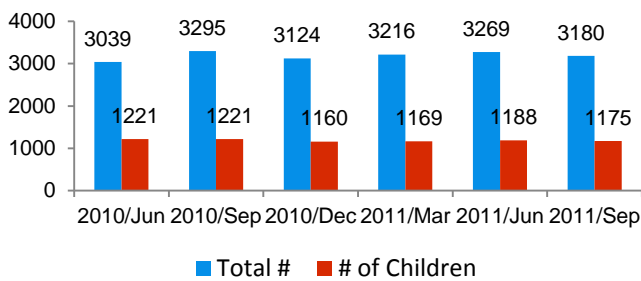
**Number of Cases**



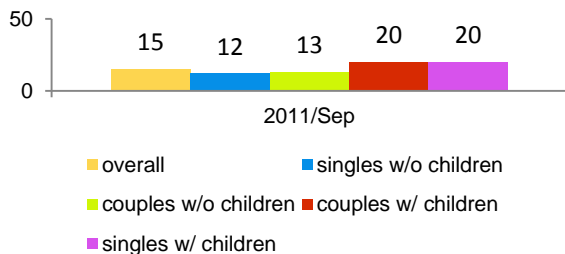
**Average Earnings per Month**



**Number of Beneficiaries**



**Average Time on Assistance (months)**



**Number of Cases by Family Structure**

